

CERTIFIED LAND CORNER RECORDATION

DESCRIPTION OF CORNER EVIDENCE FOUND, AND ORIGINAL RECORD (If known)

23	24	T.
26	25	N.

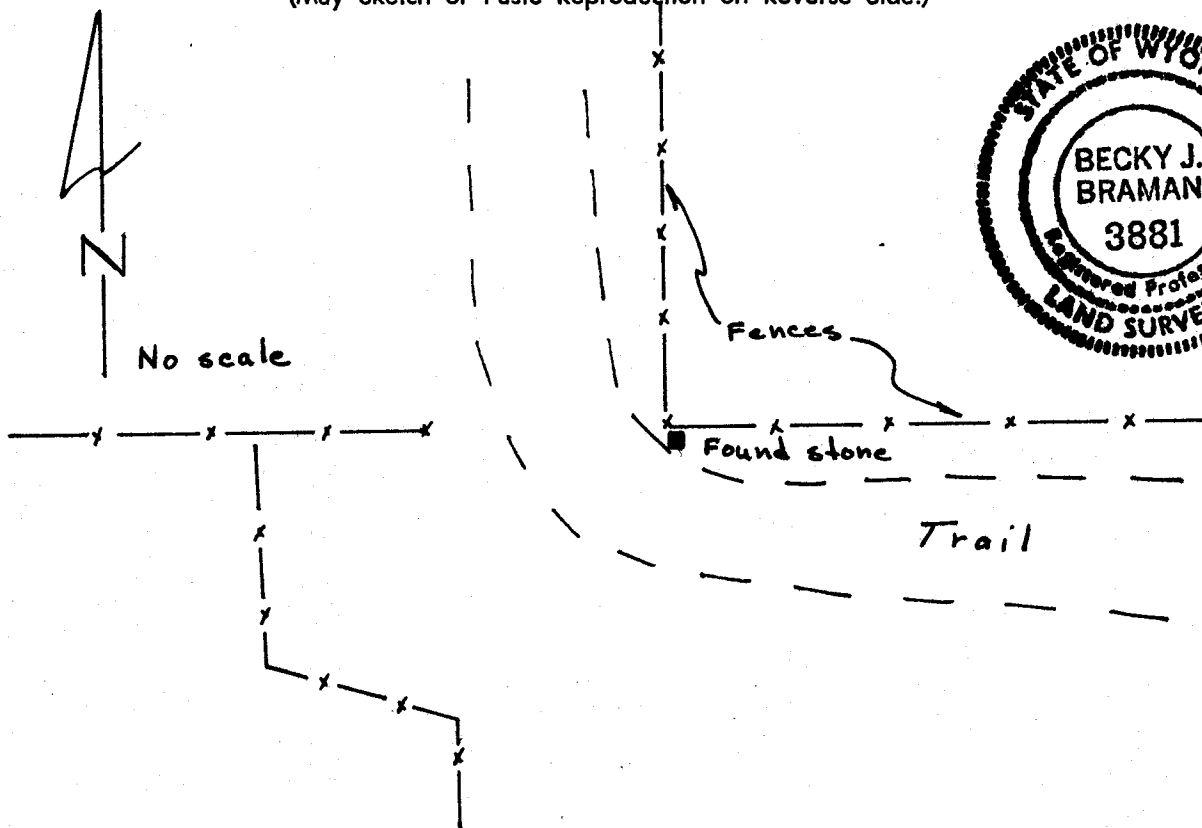
R. 62W.

Found stone, 10" x 12" x 10", set.

DESCRIPTION OF MONUMENT AND ACCESSORIES ESTABLISHED
TO PERPETUATE THE ORIGINAL LOCATION OF THIS CORNER:

Flagged fence corner

SKETCH, WITH COURSE AND DISTANCE TO ADJACENT CORNER IF DETERMINED IN THIS SURVEY.
(May Sketch or Paste Reproduction on Reverse Side.)



I, Becky J. Braman, L.S. #3881 certify that I have carefully performed or reviewed the work done on the diagrammed corner as reported on this recordation form and approve the same.

Becky J. Braman L.S. 3881
Signature of Surveyor Registration No.

STATE OF WYOMING,
Office of Clerk and Recorder,
County of Laramie

778070

This "corner record" was filed for record on the FEB 6 1985 day of 19, was noted on the cross-index plat and is assigned page No. _____, in book No. _____.

Janet C Whitehead
County Official

Cross Index No. _____	T. _____	R. _____	Mer. _____
_____	T. _____	R. _____	Mer. _____
_____	T. _____	R. _____	Mer. _____
_____	T. _____	R. _____	Mer. _____
_____	T. _____	R. _____	Mer. _____
_____	T. _____	R. _____	Mer. _____
_____	T. _____	R. _____	Mer. _____

R 21 T 16 R 62